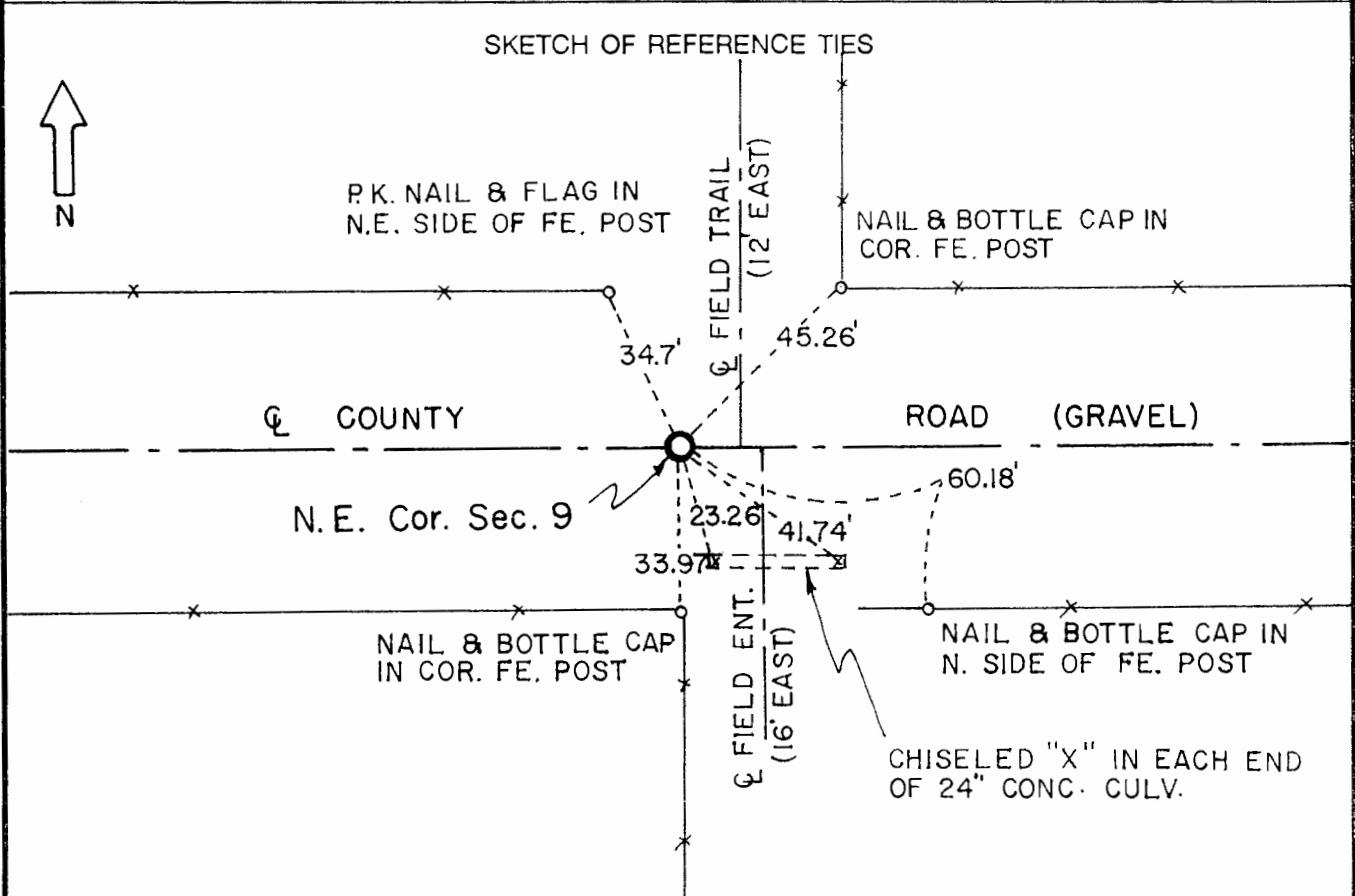


# CERTIFICATE OF LOCATION OF GOVERNMENT CORNER

**Northeast** Corner of Section **9** , Township **108** , Range **41** 5th P.M.

STATE OF MINNESOTA, County of Murray.

**Statement:** April 25, 1989 - Found two irons placed by the County Surveyor in 1899, two field stones, and remnants of a wooden stake. Lowered the monuments and placed a Mn/DOT Cast Iron monument.



Statement of evidence relative to this corner location is on the back of page.

I hereby certify that this document and the data contained herein was prepared by me or under my direct supervision and that I am a duly Registered Land Surveyor under the laws of the State of Minnesota.

*Duane A. Bonremma*  
 Duane A. Bonremma

2-21-91  
 Date

Minnesota Registration No. 14895

OFFICE OF THE COUNTY RECORDER  
 COUNTY OF MURRAY **MAR 1 1 1991**

I hereby certify that this document was filed in the County Recorder's office at \_\_\_ M. on the \_\_\_ day of \_\_\_\_\_ A.D., 19\_\_

County Recorder *James V. Johnson*

By \_\_\_\_\_, Deputy  
 DOCUMENT NO. \_\_\_\_\_

Northeast Cor. Sec. 9 T108N-R41W

Statement:

- September 1861 *Original Government Land Office Surveyor L. G. M. Fletcher records in his field notes, "set post in mound with trench pits, and a charred stake."*
- Aug. 22, 1899 *J. W. Woolstencroft, the Murray County Surveyor, records in the County Surveyor's Record Book, page 90, "2 iron stakes - 3 1/2 inch round stone on top."*
- 1983 *The Murray County Highway Engineer's Office records that they placed an Iron Pipe 8" long 4 inches below the surface and established witness ties to the Corner.*
- April 25, 1989 *Duane A. Bonnema, LS Reg. No. 14895, dug and found, at a depth of 2 feet below the road surface, the 2 irons placed by Woolstencroft in 1899 (a 3/4 inch x 18 inch iron monument and a 1 inch x 18 inch axleshaft). A 6 inch x 5 inch x 4 inch stone, a 5 inch x 3 inch x 6 inch stone and numerous pieces of what appeared to be an old wooden stake were also found at a depth of 2 feet below the road surface. Placed a Minnesota Department of Transportation Cast Iron Monument at the road surface.*